

## Flange Adapters ZFE (adjustable)

according to DIN ISO 702-1 (DIN 55028)  
for mounting face drivers type FFB / FFBH  
und reducing sleeves type RF

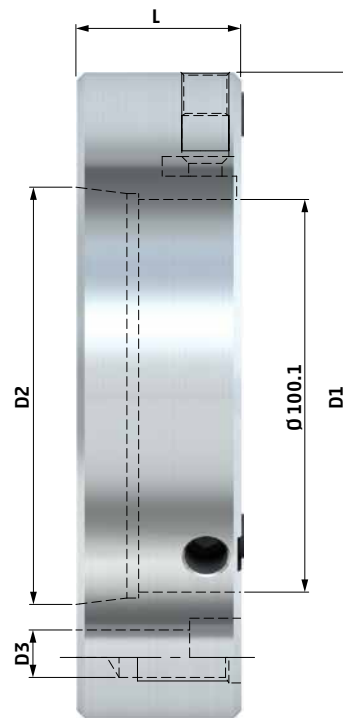
The flange adapter is used for direct mounting of **face driver type FFB and FFBH** with adjustment true. Adaption on machine tool spindle noses DIN ISO 702-1 (DIN 55026).

Our flange adapters are made of non-hardened steel. This helps to protect the spindle nose and serves for a better damping property.

### Type ZFE with short taper

for adjustment at high run out requirements

### Technical data – type ZFE with short taper



type ZFE	spindle size	D1	D2	D3 für	L	for face drivers FFB / FFBH	cat. no.
5	5	160	82.563	M10	40	01 - 5	<b>742 12</b>
6	6	165	106.375	M12	42	01 - 5	<b>742 14</b>
8	8	220	139.719	M16	42	01 - 55	<b>742 16</b>
11	11	280	196.869	M20	60	01 - 6	<b>742 18</b>

- Adapters are supplied with mounting screws to suit the machine tool spindle nose.
- Other sizes and special adapters are available upon request.
- Hardened flange adapters are available upon request.

## Clamping principle

Face drivers of the type FFB/FFBH and all other face drivers with retainer  $\text{Ø}100$  which need a very precise run out adjustment are mounted onto the machine tool spindle via flange adapter ZFE.

### Type ZFE with short taper

