



Ultra Live Centers RNH / RNCH

especially for hard turning operations

NEIDLEIN ultra live centers type RNH/RNCH are designed for hard turning operations which need a high precision and smooth running.

Type RNH with morse taper

↑ 0.003



HM with carbide tip

Type RNCH with morse taper

» extended tooling clearance
for better access of machining tools

↑ 0.003



HM with carbide tip

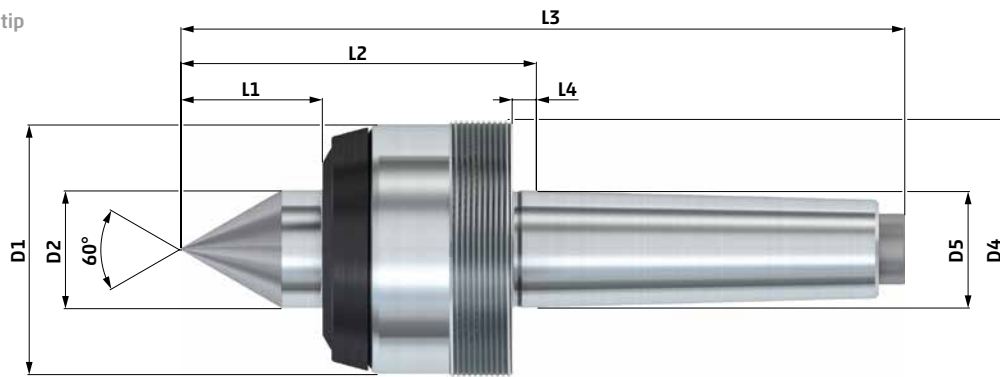
NEIDLEIN ultra live centers type RNH / RNCH ensure:

- by using of high precision bearings and a extended spindle, a increased smooth running can be possible
- run-out deviation max.: 0.003 mm
- with carbide tip for hardened workpieces
- maintenance free, due to the gasket system and the lifetime lubrication filling of the bearing
- short set-up

Technical data- type RNH with morse taper



type carbide tip



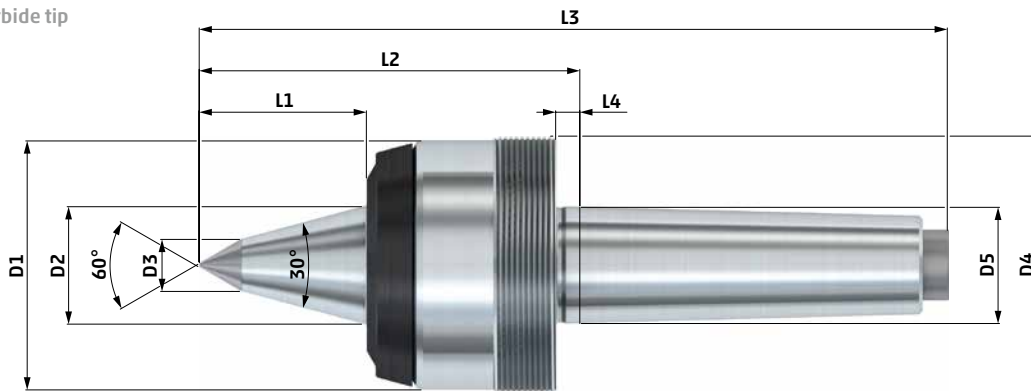
| type RNH | MK | D1 | D2 | D3 | D4 | L1 | L2 | L3 | L4 | rpm max. [1/min] | cat. no. |
|----------|----|----|------|----|-----------|----|------|-------|-----|------------------|-----------------|
| 2 | 3 | 45 | 18 | - | M48 x 1.5 | 20 | 67.5 | 153 | 5 | 8000 | 819 4904 |
| | 4 | 45 | 18 | - | M48 x 1.5 | 20 | 69 | 168 | 6.5 | 8000 | 819 5004 |
| 3 | 3 | 55 | 22 | - | M58 x 1.5 | 26 | 78.5 | 165.5 | 5 | 7000 | 819 5104 |
| | 4 | 55 | 22 | - | M58 x 1.5 | 26 | 80 | 179 | 6.5 | 7000 | 819 5204 |
| 4 | 5 | 55 | 22 | - | M58 x 1.5 | 26 | 80 | 216 | 6.5 | 7000 | 819 5304 |
| | 4 | 67 | 31.6 | - | M70 x 1.5 | 38 | 95 | 194 | 6.5 | 5000 | 819 5404 |
| | 5 | 67 | 31.6 | - | M70 x 1.5 | 38 | 95 | 231 | 6.5 | 5000 | 819 5504 |

- Run-out deviation max.: 0.003 mm.
- Extracting nuts and extracting disks see page 118 - 119 for accessories.
- Load chart see page 104.

Technical data- type RNCH with morse taper

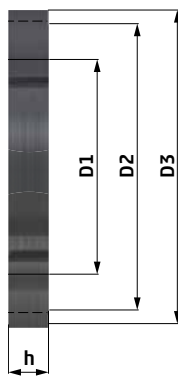


type carbide tip



| type RNCH | MK | D1 | D2 | D3 | D4 | L1 | L2 | L3 | L4 | rpm max. [1/min] | cat. no. |
|-----------|----|----|------|----|-----------|----|------|-------|-----|------------------|-----------------|
| 2 | 3 | 45 | 18 | 6 | M48 x 1.5 | 28 | 75.5 | 161 | 5 | 8000 | 819 6904 |
| | 4 | 45 | 18 | 6 | M48 x 1.5 | 28 | 77 | 176 | 6.5 | 8000 | 819 7004 |
| 3 | 3 | 55 | 22 | 10 | M58 x 1.5 | 32 | 84.5 | 171.5 | 5 | 7000 | 819 7104 |
| | 4 | 55 | 22 | 10 | M58 x 1.5 | 32 | 86 | 185 | 6.5 | 7000 | 819 7204 |
| 4 | 5 | 55 | 22 | 10 | M58 x 1.5 | 32 | 86 | 222 | 6.5 | 7000 | 819 7304 |
| | 4 | 67 | 31.6 | 14 | M70 x 1.5 | 45 | 102 | 201 | 6.5 | 5000 | 819 7404 |
| | 5 | 67 | 31.6 | 14 | M70 x 1.5 | 45 | 102 | 238 | 6.5 | 5000 | 819 7504 |

- Run-out deviation max.: 0.003 mm.
- Extracting nuts and extracting disks see page 118 - 119 for accessories.
- Load chart see page 104.

Extracting nut DIN 1804 h**Type DIN 1804 h****Technical data - type DIN 1804 h**

for ultra live centers, center pins and face driver

| D1 | D2 | D3 | h | cat. no. |
|-----------|----|----|----|---------------|
| M28 x 1.5 | 43 | 50 | 10 | 830 39 |
| M32 x 1.5 | 45 | 52 | 11 | 830 40 |
| M35 x 1.5 | 47 | 55 | 11 | 830 41 |
| M36 x 1.5 | 48 | 55 | 11 | 830 42 |
| M48 x 1.5 | 67 | 75 | 13 | 830 43 |

| D1 | D2 | D3 | h | cat. no. |
|-----------|-----|-----|----|---------------|
| M58 x 1.5 | 80 | 90 | 13 | 830 22 |
| M70 x 1.5 | 90 | 100 | 14 | 830 44 |
| M75 x 1.5 | 100 | 110 | 14 | 830 23 |
| M95 x 2 | 120 | 135 | 16 | 830 24 |
| M110 x 2 | 140 | 155 | 16 | 830 25 |