

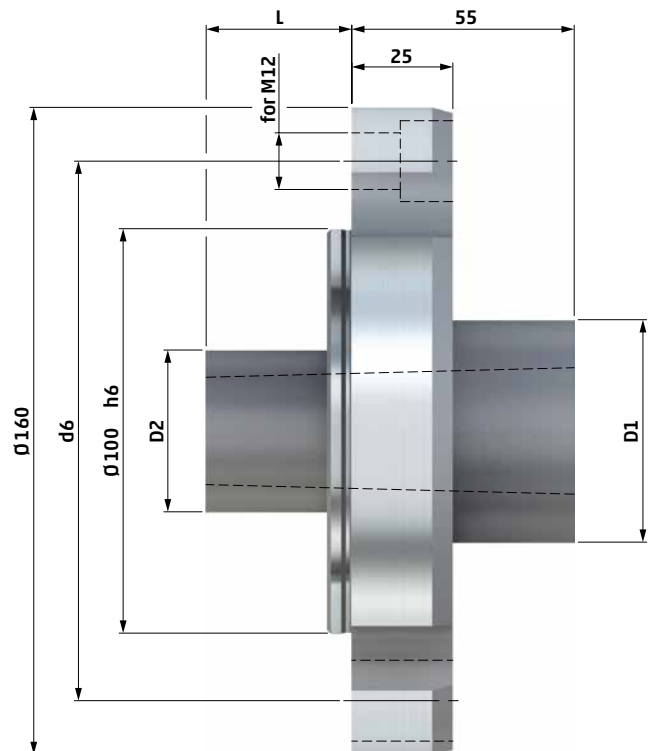
## Reducing Adapters RF

### for mounting clamping tools with morse taper shank

The reducing adapter is used for direct mounting of **face driver type SB, pipe driver type NDG** or of various center pins with morse taper shank.

#### Type RF with morse taper

#### Technical data – type RF with morse taper



type	MK	D1	D2	L	d6	cat. no.
RF						
<b>3</b>	<b>3</b>	42	36	15	133.4	<b>743 01</b>
<b>4</b>	<b>4</b>	55	40	36	133.4	<b>743 02</b>
<b>5</b>	<b>5</b>	68	55	63	133.4	<b>743 03</b>

- Adapters are supplied with mounting screws to suit the machine tool spindle nose.
- Other sizes and special adapters are available upon request.

## Clamping principle

For mounting a clamping tool with morse taper shank onto a machine tool spindle DIN ISO 702-1, a reducing flange RF is used by mounting it onto the machine tool spindle via flange adapter ZFE (e. g. at a double spindle CNC lathe).

### Type RF with morse taper

